



MONTHLY MEMBERSHIP PROGRESS REPORT

District 351

Results as of: 06/30/2019

GMT: AHMED MOSTAFA

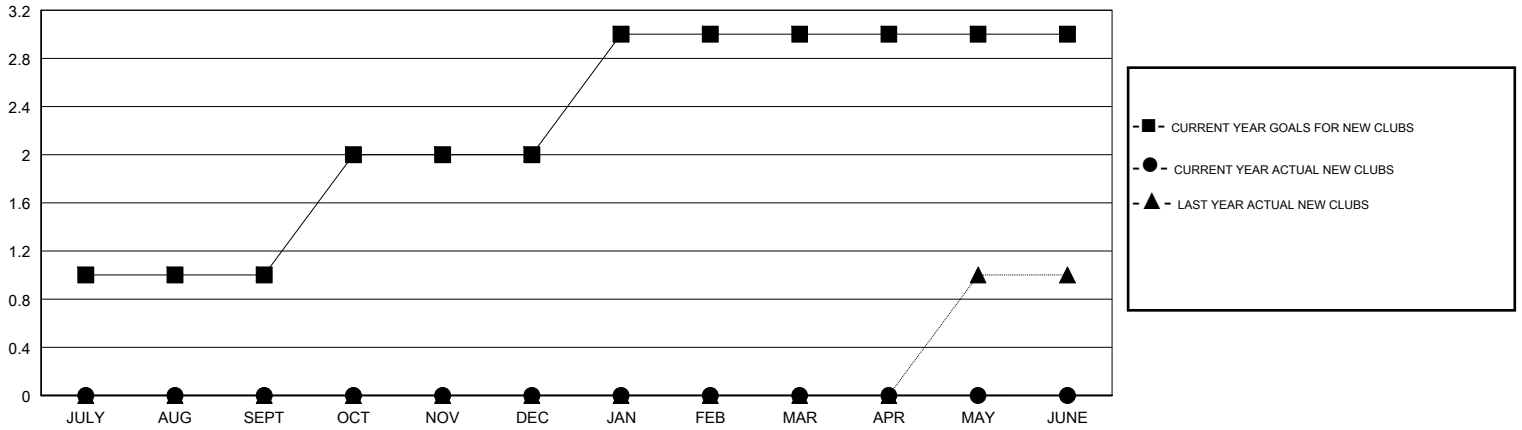
LOCATION LEBANON

GMT CA

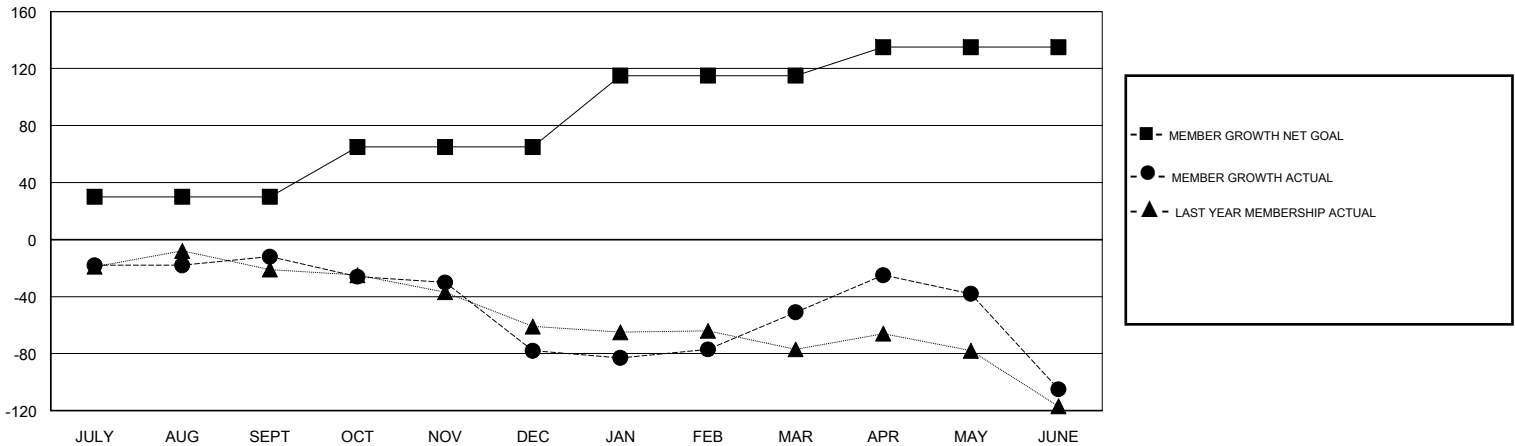
Clubs			
RESULTS FOR 2018-2019			
QUARTER	NEW CLUB GOAL	NEW CLUBS	DROPPED CLUBS
JULY/AUG/SEPT	1	0	0
OCT/NOV/DEC	1	0	0
JAN/FEB/MAR	1	0	2
APR/MAY/JUNE	0	0	1

Members			
RESULTS FOR 2018-2019			
QUARTER	MEMBER GROWTH NET GOAL	MEMBER GROWTH ACTUAL	DROPPED MEMBERS ACTUAL (including transfers)
JULY/AUG/SEPT	30	36	45
OCT/NOV/DEC	35	34	98
JAN/FEB/MAR	50	63	32
APR/MAY/JUNE	20	93	134

GOALS AND ACTUAL NEW CLUBS CUMULATIVE



GOALS AND ACTUAL MEMBERS CUMULATIVE



DROPPED CLUBS: 3	66 CLUBS OF 116 ADDED 1 OR MORE NEW MEMBERS	<u>GENDER DISTRIBUTION</u>	
DROPPED MEMBERS		MALE	1,271 (54.15%)
DECEASED	6	FEMALE	1,076 (45.85%)
CLUB CANCELLED	15	Women Percentage Fiscal Year Goal: 50%	
OTHER	288	TOTAL FAMILY UNIT MEMBERS	636
TOTAL	309	FAMILY MEMBERS PAYING HALF DUES	356

[CLICK HERE FOR CUMULATIVE MEMBERSHIP DATA](#)